



**CAPITAL RESOURCE NETWORK (CRN)** welcomes newly relocated professionals and their family to the region through a holistic approach, helping to provide needed information and local connections to alleviate relocation stresses and concerns.

CRN provides approximately 20 hours of services and serves as a point of contact for questions, a reference for resources, and connector to area business, community and employment networks.

### Increase your productivity and reduce your stress

Even prior to your start date, CRN professionally and confidentially provides local support that allows you to focus on the new job. CRN is ideal for seeking solutions and resources to the everyday questions you may have in rebuilding your community as you relocate. From recreational programs, to finding special resources for a loved one, or knowing you are working with a trusted realtor or other service provider, CRN is here for you.

### Be a part of your new community

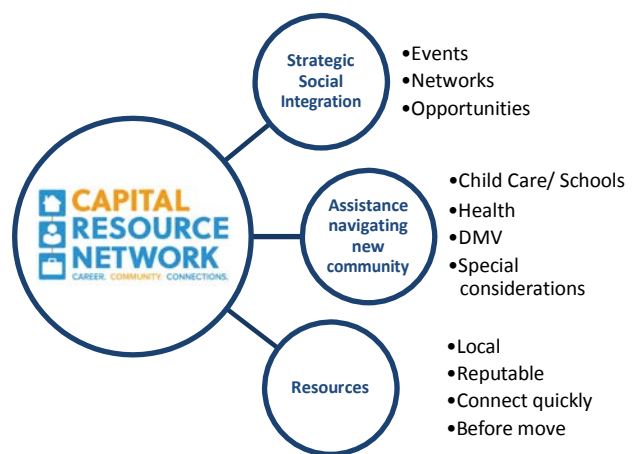
In addition to serving as a safety zone and an ongoing resource for questions, CRN will share invitations to events and send notices about volunteer and social opportunities. CRN also checks-in on a monthly basis, working to support you and your family to work and live in the Capital Region so that you thrive in your new community as quickly as possible.

### Leverage our network's dual-career support

A resource to spouses and partners looking for employment, CRN supports multiple strategies towards networking in the Capital Region. One unique aspect of the program includes coordination of informational meetings. Networking does not guarantee employment; however, it offers access to invaluable job search elements such as advice about the local landscape, questions about future hiring, potential referrals to colleagues, and an essential in-person exchange.

### SERVICES

- Initial Consult
- New Arrival Integration
- Dual Career Support



## Initial Consult

The Initial Consult is a confidential conversation between you and a CRN representative to provide information about the career support and integration services being offered. As a neutral party, CRN representatives answer questions important to making an informed decision about moving to the Capital Region. Some discussions may include children's needs, medical conditions, elder care challenges, and other private concerns where specific resources may be required.

An initial consult does not imply a commitment, it simply helps to explore options, offer an alternative perspective and provide insight to the full services that would be available to you in your new position.

## New Arrival Integration

Based on individual needs, CRN will provide:

- Monthly check-ins for up to six months
- Insight on area resources
- Access to volunteer opportunities and social events
- Assistance with strategic introductions
- Point of contact for information on schools, utilities, rentals, volunteering, community services and organizations, affinity groups

## Dual Career Support

CRN works directly with your spouse/partner on multiple strategies for gaining employment in the region, including:

- One-on-one coaching and strategy support
- Selective informational meetings (up to 3)
- Professional networking opportunities
- Feedback on resume and other written materials
- Interview preparation



LINDA ASSADIAN  
(530) 574-8480  
[llassadian@ucdavis.edu](mailto:llassadian@ucdavis.edu)  
Director



LORAIN COVELLO  
(530) 752-4066  
[lcovello@ucdavis.edu](mailto:lcovello@ucdavis.edu)  
Client Engagement and Community  
Relations Manager



SOPHIE BARBU  
(530) 304-8512  
[sjbarbu@ucdavis.edu](mailto:sjbarbu@ucdavis.edu)  
Client Services Coordinator

**Community changes everything!**  
We look forward to assisting you discover  
and grow your new community in the  
Capital Region.